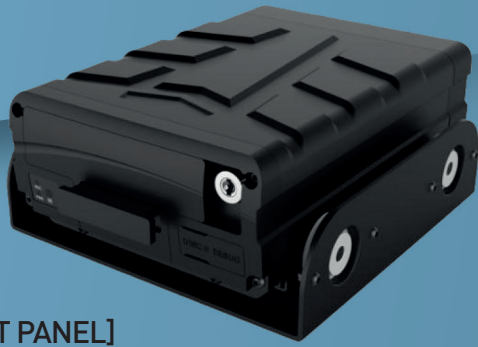


WDR-4405MC(Rev.2)

HDD Mobile DVR

SPECIFICATION

System		
Operation language	English	
Operation interface	Graphic operation interface (OSD menu)	
Password security	Two-level administration : User/Administrator password	
Video		
Video input	Support 4CH D1/720P/1080P AHD video mixed inputs	
Video output	1ch video output(V-OUT), 1ch HDMI video output	
TV system	NTSC / PAL (NTSC@120 frame 1080P / PAL@100frame 1080P)	
Image compression standard	H.264 / H.265 main profile	
Resolution	Support 1080P, 720P, 960H, D1, CIF	
Dual stream	Support	
Video display	1ch / 4ch display; Supports full screen display of event triggers	
Audio		
Audio input	4ch audio input	
Audio output	1ch audio output(A-OUT)	
Recording method	Synchronous reading in audio & video	
Image processing & storage		
Local record format	CIF / D1 / 960H / 720P / 1080P optional	
Video streaming standard	ISO 14496-10	
Video bitrate	CIF : 512Kbps ~ 128Kbps	720P : 3072Kbps ~ 768Kbps
	D1/960H : 1536Kbps ~ 512Kbps (recommend spec)	1080P : 5120Kbps ~ 1024Kbps
	4 grades optional, Highest : Best / Lowest : general	
Audio bitrate	40KB/s	
Data storage	Standard : 1x SATA HDD/SSD 1TB, up to 2TB; and 1x SD card, up to 256GB	
Alarm		
Alarm input	4ch alarm input	
Alarm output	2ch alarm output, highest output level : 12V	
Communication interface		
RS232 interface	Support	
RJ45 network interface	Support 1x6 pin aviation port to RJ45 network interface, support local network connecting with server	
USB interface	Support 1x USB interface for software upgrading and record file copy	
IR interface	IR extension interface, support remote control data reception	
GPS system		
GPS system	Support built-in GPS module : geographic coordinates and speed could be written into coding streaming	
G-Sensor		
G-Sensor	Built-in G-Sensor; support triaxial motion detection and user setting of X, Y and Z coordinates	
Software		
Playback analysis in PC	Video playback in PC and analyze vehicle info in files	
Upgrading maintenance	USB / Hard disk / SD card upgrading	



[FRONT PANEL]



[REAL PANEL]

Power	
Power input	DC 8~36V
Power output	DC 12V, max current 1A
Environmental	
Operating temp.	-20°C ~ +80°C
Dimension	
Dimension(mm)	153(W) x 187.4(D) x 74(H)

ACCESSORIES

Description	Picture	Quantity (PCS)
Power cable		1
I/O cable		1
Key		2
GPS antenna(optional)		1
Remote control(optional)		1
External camera interface cable		4
External AV-out interface cable		1

DIMENSIONS

[Unit : mm]

